

DAILY LOG
 DIRECTOR'S OFFICE
 FEDERAL BUREAU OF INVESTIGATION

1662

FILE _____
 DATE NOV 15 1961

Time	Caller	VIA	Action	Initials
	<i>H. P. Bradshaw Wintner</i>	<i>Tele</i>	<i>_____</i>	<i>H. P.</i>



DIRECTOR:	IN - OUT -	IN - OUT -	IN - OUT -	IN - OUT -	IN - OUT -
-----------	---------------	---------------	---------------	---------------	---------------

DAILY LOG
 DIRECTOR'S OFFICE
 FEDERAL BUREAU OF INVESTIGATION

FILE _____
 DATE NOV 15 1961 1102

Time	Caller	VIA	Action	Initials
8 ⁴³ / _A	(N.Y.C.) Miss Anita Wilson	Tele	Director out - left message.	By
11 ³⁶ / _A	SAC E. J. Powers	Bus	Saw Director	By
1 ⁰⁰ / _P	AAG Herbert Miller (Chicago, Ill.)	Tele	DIRECTOR OUT GIVEN ROSEN'S EXTENSION	By
3 ¹⁶ / _P	Mr. Herman Taylor	Tele	Director out - Rfd. to Mr. Henger.	By
4 ²⁰ / _P	Mr. B. M. Shepard	Tele	Rfd. to SA O'Beilne.	By
7 ⁰⁰ / _P	(Los Angeles, CALIF.) Mr. George Guetz	Tele	DIRECTOR OUT CALL CANCELLED	By
	Office closed at 9:01 PM			By

DIRECTOR:	IN - 9 ²¹ / _A	IN - 1:19 _P	IN -	IN -	IN -
	OUT - 12 ²³ / _P	OUT - 5 ²⁰ / _P	OUT -	OUT -	OUT -

HWB

DAILY LOG
DIRECTOR'S OFFICE
FEDERAL BUREAU OF INVESTIGATION

FILE _____
DATE **NOV 16 1961**

Time	Caller	VIA	Action	Initials

DIRECTOR:	IN -	IN -	IN -	IN -	IN -
	OUT -	OUT -	OUT -	OUT -	OUT -

ALL INFORMATION CONTAINED
HEREIN IS UNCLASSIFIED

DAILY LOG DATE 1-17-91 BY SP-7 JMC/RS
DIRECTOR'S OFFICE 293, 151
FEDERAL BUREAU OF INVESTIGATION

FILE 100A
DATE NOV 16 1961

Time	Caller	VIA	Action	Initials
9 ²⁴ / _A	Adm. Lawrence Frost	Tele	Director out - Rfd to Mr. Belmont.	B
11 ¹⁴ / _A	Miss Elizabeth Ann Goers (N.Y.C.)	Buss	Saw Director	By
11 ¹⁷ / _A	Miss Wilma Brezzi	Tele	Director out - Rfd. to N.Y. Office.	By
2 ⁴³ / _P	SA Henderson Hillin, Jr.	Buss	Saw Director	JW
2 ⁴⁸ / _P	SA Roland E. Trent	Buss	Saw Director	By
2 ⁵⁰ / _P	Mr. James W. Crockett	Buss	Director out - Rfd. to Mr. Kengel.	By
2 ⁵⁷ / _P	Dr. P. R. McFadden & his wife, Pat Inspector Suttler	Buss	Saw Director	By
3 ⁰² / _P	Mr. Dehoach	Buss	Saw Director	By
3 ¹⁵ / _P	Mr. & Mrs. Leon Goldstein & their daughter SA Stayleton	Buss	Director out - Requests expressed.	By
3 ⁵⁴ / _P	Miss Elizabeth A. Ahern	Buss	Saw Director	By
1	Bureau Photographs	1	1	1
office closed at 9:04 AM				JW

DIRECTOR: IN - 8⁵⁴/_A OUT - 11⁴⁵/_A IN - 12⁴¹/_P OUT - 5²⁰/_P IN - OUT - IN - OUT -

DAILY LOG
DIRECTOR'S OFFICE
FEDERAL BUREAU OF INVESTIGATION

FILE _____ *HCB*
DATE NOV 17 1961

Time	Caller	VIA	Action	Initials

DIRECTOR:	IN -	IN -	IN -	IN -	IN -
	OUT -	OUT -	OUT -	OUT -	OUT -

DAILY LOG
 DIRECTOR'S OFFICE
 FEDERAL BUREAU OF INVESTIGATION

FILE _____
 DATE NOV 17 1961

Hisz

Time	Caller	VIA	Action	Initials
9 ⁵⁸ / _A	Mr. Jack E. Reinke	Buss	Saw Director	By
1	Bureau Photographer	1	1	1
10 ¹⁴ / _A	Admiral Lawrence H. Froot	Buss	Saw Director	By
11 ¹⁶ / _A	Sen. J. Glenn Beall	Tele	Spoke to Director	By
11 ²⁰ / _A	Mr. Jay Sourwine	Tele	Director out - Red. to Mr. Belmont.	By
3 ²⁰ / _P	Miss Geraldine Tankersley	Buss	Saw Director	By
4 ⁰³ / _P	(Ross Ford, Ohio) Mrs. Anna H. Davis	Tele	Call terminated.	By
4 ²⁸ / _P	Mrs. Wendell Patton & Bros	Buss	Director out - Regrets expressed.	By
1	her two sons	1	1	1
1	SA Stogleton	1	1	1
office closed at 9:01 PM				By

DIRECTOR:	IN - 8 ⁵⁹ / _A	IN - 12 ⁵⁴ / _P	IN -	IN -
	OUT - 11 ⁴⁸ / _A	OUT - 5 ⁴³ / _P	OUT -	OUT -

DAILY LOG
 DIRECTOR'S OFFICE
 FEDERAL BUREAU OF INVESTIGATION

FILE _____
 DATE NOV 18 1961

Time	Caller	VIA	Action	Initials

DIRECTOR:	IN - OUT -	IN - OUT -	IN - OUT -	IN - OUT -	IN - OUT -
-----------	---------------	---------------	---------------	---------------	---------------

DAILY LOG
 DIRECTOR'S OFFICE
 FEDERAL BUREAU OF INVESTIGATION

FILE _____
 DATE NOV 18 1961

Time	Caller	VIA	Action	Initials
9:55 A	(D-VA) SEN. A. WILLIS ROBERTSON	Tele	DIRECTOR OUT Rtd to SA HOLROYD	JRW
10:20 A	Mr. Hoover	Tele	No messages	JRW
10:29	NOMER BRETT	Tele	Left message	JRW
	office closed at 2:01 PM			JRW

DIRECTOR:	IN -	IN -	IN -	IN -	IN -
	OUT -	OUT -	OUT -	OUT -	OUT -

DAILY LOG
DIRECTOR'S OFFICE
FEDERAL BUREAU OF INVESTIGATION

FILE _____
DATE NOV 19 1961



Time	Caller	VIA	Action	Initials

DIRECTOR:	IN -	IN -	IN -	IN -	IN -
	OUT -	OUT -	OUT -	OUT -	OUT -

DAILY LOG
DIRECTOR'S OFFICE
FEDERAL BUREAU OF INVESTIGATION

FILE _____
DATE NOV 20 1961

MS

Time	Caller	VIA	Action	Initials
9 ³⁰	called Dr Dwyden	tele	_____	<i>ED</i>
11 ⁰⁵	called Vice Consul - Dr. Carique			<i>BR</i>
12 ⁰⁵	Judge Nath McQuinn	tele	_____	<i>BR</i>

DIRECTOR:	IN -	IN -	IN -	IN -	IN -
	OUT -	OUT -	OUT -	OUT -	OUT -

HWA

DAILY LOG
DIRECTOR'S OFFICE
FEDERAL BUREAU OF INVESTIGATION

FILE _____
DATE NOV 20 1961

Time	Caller	VIA	Action	Initials
11 ¹³ / _A	Mr. Warren Rogers, Jr., & his son, Sean	Stus	Saw Director	By
	Mr. DeLoach			
11 ¹⁵ / _A	Bureau Photographer			
3 ⁴¹ / ₈	Mr. Peter Connolly; his mother; & Mr. Don Lamb	Stus	Saw Director	By
	Mr. Kemper			
	ABC Photographer			
	Bureau Photographer			
3 ⁴⁶ / ₈	SA R. L. Gaisst	Stus	Saw Director	By
4 ⁰¹ / ₈	SA D. E. Jones	Stus	Saw Director	By
4 ¹³ / ₈	SA J. F. Stanley	Stus	Saw Director	By
5 ⁰⁸ / ₈	(San Francisco, Calif.) Cong. John J. Rooney	Tele	Spoke to Director.	By
8 ⁵² / ₂	(Manteca, Calif.) Mr. Peter Bryan	Tele	DIRECTOR OUT CALL CANCELLED	By
	office closed at 9:06 PM			

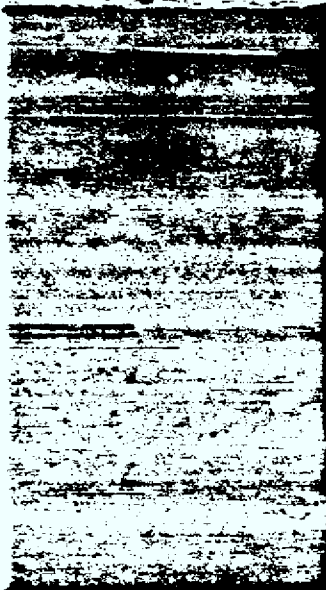
DIRECTOR:	IN - 9 ²² / _A	IN - 11 ⁰¹ / _A	IN - 12 ⁵⁰ / _P	IN -
(P. Dwyden)	OUT - 10 ¹⁵ / _A	OUT - 11 ³⁶ / _A	OUT - 5 ²⁰ / _P	OUT -

DAILY LOG
 DIRECTOR'S OFFICE
 FEDERAL BUREAU OF INVESTIGATION

HWZ

FILE _____
 DATE NOV 21 1961

Time	Caller	VIA	Action	Initials
<i>11:5</i>	<i>Power Press</i>	<i>tele</i>	<i>_____</i>	<i>HWZ</i>



DIRECTOR:	IN -	IN -	IN -	IN -	IN -
	OUT -	OUT -	OUT -	OUT -	OUT -

DWZ

DAILY LOG
DIRECTOR'S OFFICE
FEDERAL BUREAU OF INVESTIGATION

FILE _____
DATE NOV 21 1961

Time	Caller	VIA	Action	Initial
9 ⁵³ / _A	Ambassador Joseph Garland Bers		Saw Director	By
10 ⁰⁶ / _A	Mr. Nelson Smith (Glebe, Missouri)	Tele	Director advised - Spoke to Amb. Garland.	By
11 ⁵⁰ / _A	Cong. Clarence Cannon	Tele	Director out - left message.	By
1 ⁰⁵ / _P	Miss Maria S. Alba	Tele	Handled by SA Liddy.	By
1 ¹⁵ / _P	Cong. Director tele Cong. Cannon - Spoke. (Baltimore, Md.)			By
4 ³⁷ / _P	Mr. Lou Bondfield	Tele	Spoke to Director.	By
	office closed at 9:01 PM			By

DIRECTOR:	IN - 9 ⁰⁰ / _A OUT - 11 ⁴⁷ / _A	IN - 12 ⁵³ / _P OUT - 5 ¹¹ / _P (Mayflower cu)	IN - OUT -	IN - OUT -
-----------	--	---	---------------	---------------

DAILY LOG
DIRECTOR'S OFFICE
FEDERAL BUREAU OF INVESTIGATION

FILE 1075
DATE NOV 22 1961

Time	Caller	VIA	Action	Initial
9:50	Homer Rott	tele		
10:00	Judge Ed Curran	tele		
11:15	Called Judge Curran	tele		
12:	Dick Berlin	tele		

DIRECTOR:	IN -	IN -	IN -	IN -	IN -
	OUT -	OUT -	OUT -	OUT -	OUT -

DAILY LOG
DIRECTOR'S OFFICE
FEDERAL BUREAU OF INVESTIGATION

Page 1
(Continued)

FILE _____
DATE NOV 22 1961

Time	Caller	VIA	Action	Initials
9 ¹² / _A	Admiral Lewis Strauss' secretary	Tele	Arranged appointment - for the Admiral.	By
10 ⁰⁰ / _A	Mr. Carson W. Culy	Per	Saw Director	By
10 ⁰⁵ / _A	Admiral Lewis Director	Tele	Mr. Mohr - Spoke.	By
10 ²² / _A	Admiral Lewis Strauss (N.Y.C.)	Per	Saw Director	By
10 ²⁸ / _A	Mr. Richard Berlin (N.Y.C.)	Tele	Spoke to Director.	By
12 ⁰⁵ / _P	Mr. Richard Berlin	Tele	Director out - Spoke to Miss Gandy.	By
2 ¹⁵ / _P	Mr. Michael Keogh	Tele	Handled by Miss Gandy	By
2 ²⁵ / _P	75 STUDENTS & 5 ADULTS from Covington + Mandeville LOUISIANA Tour Leader FRAUSON	Per	Director out - regrets expressed	By
2 ⁵⁰ / _P	Mrs. John Thomas & six students from Mandeville, La.	Per	Director out - Requested auto. photo.	By
3 ⁰⁵ / _P	Director tele Mr. Berlin in N.Y.C. - Spoke.			By
3 ¹⁵ / _P	Mr. Belmont	Tele	Spoke to Director.	By
	(Continued on second page.)			

DIRECTOR: IN - 8⁵⁹/_A IN - 10⁰⁴/_P IN - IN -
OUT - 11⁵³/_A OUT - 5⁰⁸/_P OUT - OUT -

Page 2

DAILY LOG
DIRECTOR'S OFFICE
FEDERAL BUREAU OF INVESTIGATION

FILE H/2
DATE Nov. 22, 1961

Time	Caller	VIA	Action	Initials
	(Continued from first page)			
3 ⁴⁹ / ₈	Dr. & Mrs. Melvin G. Alyea; their three children; and eleven of their son's schoolmates	Sec	Saw Director	By
	Mr. Kemper			
3 ⁵⁶ / ₈	Judge Edward M. Curran	Per	Saw Director	By
1 ²⁰ / ₈	(Harrington, Minn) Mr. James Walte	Tele	Ext to SA SULLIVAN	By
	office closed at 9:06 PM			By

DIRECTOR:

IN -

IN -

IN -

IN -

IN -

OUT -

OUT -

OUT -

OUT -

OUT -

Handwritten signature/initials

DAILY LOG
DIRECTOR'S OFFICE
FEDERAL BUREAU OF INVESTIGATION

FILE _____
DATE NOV 23 1961

Time	Caller	VIA	Action	Initials

DIRECTOR:	IN -	IN -	IN -	IN -	IN -
	OUT -	OUT -	OUT -	OUT -	OUT -

DAILY LOG
DIRECTOR'S OFFICE
FEDERAL BUREAU OF INVESTIGATION

MW

FILE _____
DATE NOV 23 1961

Time	Caller	VIA	Action	Initia
	<i>Office Closed all Day Thanksgiving. By</i>			

DIRECTOR:	IN -	IN -	IN -	IN -	IN -
	OUT -	OUT -	OUT -	OUT -	OUT -

DAILY LOG
DIRECTOR'S OFFICE
FEDERAL BUREAU OF INVESTIGATION

FILE _____ *HWS*
DATE NOV 24 1961

Time	Caller	VIA	Action	Initials



DIRECTOR:	IN -	IN -	IN -	IN -	IN -
	OUT -	OUT -	OUT -	OUT -	OUT -

DAILY LOG
 DIRECTOR'S OFFICE
 FEDERAL BUREAU OF INVESTIGATION

Page 1
 (continued)

FILE

NOV 24 1961

DATE

10W3

Time	Caller	VIA	Action	Initials
9 ⁰⁰ / _A	Director tele Mr Foster	-	Foster out - Call cancelled.	By 6
9 ¹⁰ / _A	Mr. Bud Rosenthal; three adults; and twenty six Boy Scouts SA Staxleton	Bus	Saw Director	By
9 ²⁵ / _A	Mr. Gordon Gray & three children	Bus	Taken on tour by SA Figg, Jr.	By
9 ⁵⁴ / _A	SA Henry E. Wilson; his wife, Elizabeth; their two children, Elaine and Jennifer; & his in-laws, Mr. & Mrs. Dwight C. Campbell SA Morris Bureau Photographer	Bus	Saw Director	By
9 ⁵⁹ / _A	SA Jack R. Smallman; his wife, Ruth; their two children, June and	Bus	Saw Director	By
(Continued on second page.)				

DIRECTOR:	IN - 8 ⁵⁴ / _A	IN - 11 ³⁰ / _A	IN - 1 ⁰⁸ / _P	IN -	IN -
	OUT - 10 ²⁰ / _A	OUT - 11 ⁵⁶ / _A	OUT - 5 ⁵⁰ / _P	OUT -	OUT -

Page 2
(Continued)

HWB

DAILY LOG
DIRECTOR'S OFFICE
FEDERAL BUREAU OF INVESTIGATION

FILE _____
DATE Nov. 24, 1961

Time	Caller	VIA	Action	Initials
	(Continued from first page.)			
	Jeffrey, & his parents, Dr. & Mrs. John L. Small don			
	SA Morris			
	Bureau Photographer			
10 ³⁶ / _A	Mr. Harry Savasten	Tele	B.S.D. to Mr. Wick.	By
10 ⁵⁷ / _A	Mrs. Kay Vayda	Tele	Left message.	By
11 ⁰⁴ / _A	Mr. & Mrs. William Newby & their three children, & a Mrs. Figg & her three children	News	Director out- regrets expressed.	By
	Tour Leader Franzen			
11 ⁵⁴ / _A	Mr. Belmont	Tele	Director out- Left no message.	By
12 ⁴³ / _P	Mrs. Mortimer M. Caglin, her four children, & a Mr. & Mrs. Richard Weil their three children	News	Taken on tour by Inspector Sittler.	By
	(Continued on third page.)			

DIRECTOR:

IN -

IN -

IN -

IN -

IN -

OUT -

OUT -

OUT -

OUT -

OUT -

KWS

DAILY LOG
DIRECTOR'S OFFICE
FEDERAL BUREAU OF INVESTIGATION

FILE _____
DATE Nov 24, 1961

Time	Caller	VIA	Action	Initials
	(Continued from second page.)			
1:17 2:10	Miss Dolores Hunter	Tele	Rfd To Kemper	RPK Jaw
	Mr. Mike Maliski;	pers	Saw Director	RR
	Mr. Ben Senturia & Hank Freund			
	Tour Leader - Frauson			
3:30 P	Mr. Tom Vayda & his Father, George	pers	Saw Director	Gj
	SA Murphy			
3:32 P	Duncan Photographer			
3:30 P	Mr. Mike Moore & his uncle, Grady Moore	pers	Saw Director	Gj
	SA Liddy			
5:17 P	Mr. Belmont	Tele	DIRECTOR OUT LEFT NO MESSAGE	Jaw Jaw
	Office closed at 9:02 PM			

DIRECTOR:	IN -	IN -	IN -	IN -	IN -
	OUT -	OUT -	OUT -	OUT -	OUT -

DAILY LOG
DIRECTOR'S OFFICE
FEDERAL BUREAU OF INVESTIGATION

FILE _____
DATE NOV 25 1961

Time	Caller	VIA	Action	Initials

DIRECTOR:

IN -

IN -

IN -

IN -

IN -

OUT -

OUT -

OUT -

OUT -

OUT -

DAILY LOG
 DIRECTOR'S OFFICE
 FEDERAL BUREAU OF INVESTIGATION

FILE _____
 DATE NOV 25 1961

Handwritten initials

Time	Caller	VIA	Action	Initials
<i>10¹⁹ A</i>	<i>Mr. Hoover</i>	<i>Tele</i>	<i>NO Messages</i>	<i>[Handwritten initials]</i>
	<i>office closed at 2:01 PM</i>			<i>[Handwritten initials]</i>

DIRECTOR:	IN -	IN -	IN -	IN -	IN -
	OUT -	OUT -	OUT -	OUT -	OUT -

DAILY LOG
DIRECTOR'S OFFICE
FEDERAL BUREAU OF INVESTIGATION

FILE 11/26
DATE NOV 26 1961

Time	Caller	VIA	Action	Initials
	Office Closed All Day Sunday - By			

DIRECTOR:	IN -	IN -	IN -	IN -
	OUT -	OUT -	OUT -	OUT -

HWS

DAILY LOG
DIRECTOR'S OFFICE
FEDERAL BUREAU OF INVESTIGATION

FILE _____
DATE NOV 27 1961

Time	Caller	VIA	Action	Initials
9 ³³ / _A	SAC D. W. Elson	Per	Saw Director	By
9 ⁴⁴ / _A	Mr. Richard Berlin (N. Y. C.)	File	Spoke to Director.	By
11 ¹¹ / _A	SA P. F. O'Connell, Jr.	Per	Saw Director	By
3 ⁰⁶ / _P	Director tele Judge Ed Curran - Spoke.			By
8 ¹³ / _P	TELE. COLLECT from N.Y.C. Mr. D. D. Kirkpatrick	Tele	Operator Rtd to Hodges	fw
8 ⁵⁷ / _P	(New Haven, Conn.) Mrs. Maxine Adams	Tele	DIRECTOR OUT CALL CANCELLED	fw
office closed at 9:02 PM				fw

DIRECTOR:	IN - 9 ⁰³ / _A	IN - 12 ⁵² / _P	IN -	IN -
	OUT - 11 ⁵³ / _A	OUT - 5 ⁰⁸ / _P	OUT -	OUT -

DAILY LOG
DIRECTOR'S OFFICE
FEDERAL BUREAU OF INVESTIGATION

FILE _____
DATE NOV 28 1961

bws

Time	Caller	VIA	Action	Initials
920	Bower Krett	tele	_____	Perry
358	Don Parsons	tele	_____	bws
520	Rose Mary Woods	tele	(for Angeles)	bws

DIRECTOR:	IN -	IN -	IN -	IN -	IN -
	OUT -	OUT -	OUT -	OUT -	OUT -

DAILY LOG
 DIRECTOR'S OFFICE
 FEDERAL BUREAU OF INVESTIGATION

FILE _____
 DATE NOV 28 1961

10/85

Time	Caller	VIA	Action	Initials
12:30	A Mr. Menzer (phonetic)	Tele	Left message.	By
12:45	Mr. Allen Dulles	Tele	Director out - Rfd. to Mr. Ingram.	By
10:15	Mr. Belmont	Tele	Left message - Given message.	By
1:45	Prof. Martin Meadows	Tele	Rfd. to SA Huntley.	By
3:45	Mr. Stan Smith	Sec	Rfd. to Mr. Kemper.	JW
4:15	Mr. Allen Dulles	Sec	Saw Director	By
7:45	Mr. Belmont	Tele	Spoke to Director.	By
office closed at 9:01 PM				JW

DIRECTOR: IN - 9⁰¹/_A IN - 11³³/_A IN - 12⁵²/_P IN -
 (CIA B/ds) (Langley) OUT - 11⁵²/_A OUT - 5⁵¹/_P OUT -
 (Langley) (Langley) (Langley) (Langley)

DAILY LOG
 DIRECTOR'S OFFICE
 FEDERAL BUREAU OF INVESTIGATION

FILE
 DATE NOV 29 1961

Time	Caller	VIA	Action	Initials
9:00	Called Dr. Geier	-	none	HWS
6:30	Called Mrs. Tracy Gooder - Los Angeles	-		HWS

DIRECTOR:

IN -	IN -	IN -	IN -	IN -
OUT -	OUT -	OUT -	OUT -	OUT -

DAILY LOG
DIRECTOR'S OFFICE
FEDERAL BUREAU OF INVESTIGATION

FILE WNR
DATE NOV 29 1961

Time	Caller	VIA	Action	Initials
11 ⁰⁶ / _A	Mr. Donald Parsons	Bers	Saw Director	By [initials]
11 ⁰⁸ / _A	Mr. Willis Cato	Bers	Director out - R.F.B. to SA Fulton.	By [initials]
12 ⁴² / _P	Mr. Eugene Oriker	Bers	Left message	By [initials]
2 ¹² / _P	Mr. JOHN D. RHODES	Per.	DIRECTOR OUT EXPRESSED REGRETS	By [initials]
2 ⁴⁰ / _P	Mr. Louis PONDFIELD	Tele	DIRECTOR OUT LEFT WORD	By [initials]
* 4 ⁴³ / _P	(Bowling Green, Mo.) Sen. Edward V. Long	Tele	Director out - Left message.	By [initials]
4 ⁴⁵ / _P	Director tele Mr. Louis Pondfield - Syke.			By [initials]
* 4 ⁵² / _P	(Allentown, Pa.) Mr. James Glatin	Tele	R.F.B. to SA Healy.	By [initials]
Office closed 9:02 P.M. Rdl				

DIRECTOR:	IN - 8 ⁵⁷ / _A	IN - 11 ⁰⁴ / _A	IN - 12 ⁵⁵ / _P	IN -	IN -
	OUT - 9 ¹⁷ / _A	OUT - 11 ⁵⁷ / _A	OUT - 5 ¹¹ / _P	OUT -	OUT -

DAILY LOG
DIRECTOR'S OFFICE
FEDERAL BUREAU OF INVESTIGATION

FILE _____ *WZ*
DATE NOV 30 1961

Time	Caller	VIA	Action	Initials

DIRECTOR:	IN -	IN -	IN -	IN -	IN -
	OUT -	OUT -	OUT -	OUT -	OUT -

DAILY LOG
 DIRECTOR'S OFFICE
 FEDERAL BUREAU OF INVESTIGATION

FILE _____ *HWS*
 DATE NOV 30 1961

Time	Caller	VIA	Action	Initials
8 ⁵¹ / _A	(Fonc Lauderdale, Fla.) Mr. Tom Vinceguerra	Tele	Director out - left message.	By
10 ⁰³ / _A	(Gastonia, N.C.) Dr. W. W. Walker	Tele	Director out - left message.	By
10 ²⁸ / _A	Mr. Alan H. Belmont; his wife, Loretta; their two children, Barbara, age 13; Nicky, age 10 Bureau Photographer (Los Angeles, Cal.)	Bus	Saw Director	By
11 ⁰⁷ / _A	Prof. Roger Swearingen (WEEsbrough, Pa.)	Tele	Rfd. to SA O'Beirne.	By
11 ⁴⁷ / _A	Mr. J. James Moore (ALEXANDRIA, LOUISIANA)	Tele	Rfd. to SA Healy.	By
12 ²⁰ / _P	Dr. Robert Lee	Tele	Director out Rfd to Mr. Jones	By
office closed at 9:01 PM				By

DIRECTOR:	IN - 10 ⁰⁴ / _A OUT - 10 ⁵¹ / _A	IN - 11 ³⁷ / _A OUT - 12 ⁰⁸ / _P	IN - 1 ⁰⁸ / _P (Rm 5231) OUT - 5 ⁰² / _P	IN - 5 ⁰⁵ / _P OUT - 5 ¹⁷ / _P	IN - OUT -
-----------	---	---	--	---	---------------

DAILY LOG
 DIRECTOR'S OFFICE
 FEDERAL BUREAU OF INVESTIGATION

FILE _____
 DATE DEC 1 - 1961

HWB

Time	Caller	VIA	Action	Initial
9 ³⁰ / _A	Mr. (Fort Lauderdale, Fla) Tom Vinceguerra	Tele	Director out - Rfd. to Mr. Leinbaugh.	By
10 ⁰² / _A	Mr. Belmont	Tele	See Spoke to Director.	By
10 ⁰⁴ / _A	Mr. Geoffrey T. D. Battison	Pers	Saw Director	By
10 ⁴⁰ / _A	Mr. Gordon Martin	Tele	Rfd. to Mr. Leinbaugh.	By
10 ⁴² / _A	(Coeur d'Alene, Idaho) Mr. Harold Lines	Tele	Rfd. to SA Healy.	By
11 ⁰⁰ / _A	SA Jack Keith, Jr. (N.Y.C.)	Pers	Saw Director	By
11 ⁰⁶ / _A	Mr. Frank Kaminski	Tele	Rfd. to SA Healy.	By
11 ²² / _A	SA Victor R. Schaefer	Pers	Saw Director	By
11 ³⁵ / _A	Rev. Robert Suttie	Tele	Director out - Rfd. to SA Mitchell.	By
12 ³⁵ / _P	The office of Cong. H. J. Addonizio	Tele	Rfd. to Mr. Jones.	By
2 ⁴⁵ / _P	(Chester, Pa.) Mrs. John Pichla	Tele	Rfd. to SA Liddy.	Jlw
3 ¹⁵ / _P	Mr. J. J. Reiges	Pers	Rfd. to Mr. Leinbaugh.	Bel
10 ¹⁵ / _P	(Boston, Mass) Mr. Joe Lane	Tele	DIRECTOR OUT Rfd TO SA Hodges	Bel
office closed at 9:01 PM				Jlw

DIRECTOR:	IN - 8 ⁵⁵ / _A	IN - 10 ⁵⁶ / _A	IN - 10 ⁶ / _P	IN -	IN -
(Lab)	OUT - 10 ⁴⁵ / _A	OUT - 12 ⁰⁷ / _P	OUT - 5 ⁵⁸ / _P	OUT -	OUT -

DAILY LOG
 DIRECTOR'S OFFICE
 FEDERAL BUREAU OF INVESTIGATION

FILE

4775

DEC 1 - 1961

DATE

Time	Caller	VIA	Action	Initials

DIRECTOR:	IN -	IN -	IN -	IN -	IN -
	OUT -	OUT -	OUT -	OUT -	OUT -

DAILY LOG
DIRECTOR'S OFFICE
FEDERAL BUREAU OF INVESTIGATION

KWS

FILE _____
DATE DEC 2 - 1961

Time	Caller	VIA	Action	Initials
10 ¹³ P	Mr. Hoover	Tele	no message	JW
11 ¹⁸ P	Homer Brett	Tele	left message	JW
14 ⁷ P	Burlington, N.C. (colloq) Mr. James W. Andrews	Tele	Rfd to SA Roilly	JW
5 ⁰¹ P	office closed at		2:01 PM	JW

DIRECTOR:	IN -	IN -	IN -	IN -	IN -
	OUT -	OUT -	OUT -	OUT -	OUT -

DAILY LOG
DIRECTOR'S OFFICE
FEDERAL BUREAU OF INVESTIGATION

FILE

HWZ

DEC 2 - 1961

DATE

Time	Caller	VIA	Action	Initials

DIRECTOR:	IN -	IN -	IN -	IN -	IN -
	OUT -	OUT -	OUT -	OUT -	OUT -

DAILY LOG
 DIRECTOR'S OFFICE
 FEDERAL BUREAU OF INVESTIGATION

FILE _____
 DATE DEC 3 - 1961

105

Time	Caller	VIA	Action	Initials
	Office Closed all Day Sunday - by			

DIRECTOR: IN - IN - IN - IN - IN -
 OUT - OUT - OUT - OUT - OUT -

10/52

DAILY LOG
DIRECTOR'S OFFICE
FEDERAL BUREAU OF INVESTIGATION

FILE _____

DATE **DEC 3 - 1961**

Time	Caller	VIA	Action	Initials

DIRECTOR:	IN -	IN -	IN -	IN -	IN -
	OUT -	OUT -	OUT -	OUT -	OUT -

DAILY LOG
 DIRECTOR'S OFFICE
 FEDERAL BUREAU OF INVESTIGATION

FILE _____
 DATE DEC 4 - 1961

1252

Time	Caller	VIA	Action	Initials
9 ⁵⁰ / _A	SA William B. Dillon	Buss	Saw Director	By
1	Bureau Photographer	1	1	1
10 ⁰¹ / _A	Mr. Charles Bacon	Buss	Saw Director	By
	Mr. Garrett Crouch			
	Mr. Bill Hauck			
	Mr. DeLoach			
10 ³² / _A	(Hackensack, N.J.) Miss Muriel Aschendorf	File	Ref. to Mr. Kemper	By
10 ⁵⁷ / _A	(Los Angeles, Calif.) Mr. Rodger Swearingen	File	Director out - Ref. to SA O'Beine.	By
11 ¹⁹ / _A	(Chicago, Ill.) Mr. Joseph P. Kennedy	File	Spoke to Director.	By
11 ³³ / _A	(Pittsburgh, Penna.) Mr. J. James Moore	File	Ref. to SA O'Beine.	By
3 ⁰⁰ / _P	Clerk David W.	Buss	Saw Director	By
	Ackerman & his			
	wife, Eleanor			
	Tour Leader Francon			
4 ⁴⁵ / _P	Sen. Strom Thurmond	Tele	Director out - Terminated call.	By
7 ⁵⁰ / _P	Judge Edward Tamm	File	Spoke to Director.	By
7 ⁵⁰ / _P	(ATLANTA, Georgia) Mr. Pierson Money	Tele	DIRECTOR OUT Ref. to ATLANTA Office	JW
	Office closed at 9:01 PM			JW

DIRECTOR:	IN - 8 ⁵⁸ / _A	IN - 12 ⁴⁸ / _P	IN -	IN -	IN -
	OUT - 11 ⁴⁹ / _A	OUT - 5 ²⁶ / _P	OUT -	OUT -	OUT -

DAILY LOG
 DIRECTOR'S OFFICE
 FEDERAL BUREAU OF INVESTIGATION

FILE
 DATE DEC 4 - 1961

1055

Time	Caller	VIA	Action	Initials
<i>9:10</i>	<i>Called Dr. Geier</i>			<i>HWS</i>
<i>9:30</i>	<i>Called Mrs. Blood</i>			<i>HWS</i>

DIRECTOR:	IN -	IN -	IN -	IN -
	OUT -	OUT -	OUT -	OUT -

DAILY LOG
 DIRECTOR'S OFFICE
 FEDERAL BUREAU OF INVESTIGATION

FILE _____

DATE DEC 5 - 1961

Time	Caller	VIA	Action	Initials
9 ¹² / _A	Director tele Mr. Tudor (Cincinnati, Ohio)		- Spoke.	By
9 ⁴⁸ / _A	Mr. Don Herman (Miami, Fla.)	Tele	Director out - Rfd to Mr. Winter	By
10 ¹⁵ / _A	Dr. Inez Graham	Tele	Director out - Rfd. to SA Reed.	By
11 ²² / _A	Sgt. Arthur Frayler	Pers	Saw Director	By
1	Mr. Kemper	1	1	1
12 ⁴⁰ / _P	Sen. Strom Thurmond	Tele	Director out Rfd. to Mr. DeLoach.	JW
2 ¹⁷ / _P	Mr. John Brandy (NYC)	Pers	DIRECTOR OUT LEFT RECEPTION ROOM	JW
2 ⁵⁷ / _P	Mr. Richard Berlin	Tele	DIRECTOR OUT LEFT WORD	JW
3 ²³ / _P	Mrs. Anna Jane Mayfield	Pers	SAW DIRECTOR	JW
3 ⁵¹ / _P	39 members of New Agents' CLASS # 4	Pers	SAW DIRECTOR	JW
	2 CLASS COUNSELORS			
	Mr. MALONE			
	office closed at 9:01 PM			JW

DIRECTOR:	IN - 9 ⁰⁹ / _A	IN - 11 ⁰⁸ / _A	IN - 12 ⁴⁸ / _P	IN -
(statler)	OUT - 9 ⁴⁵ / _A	OUT - 11 ⁴⁷ / _A	OUT - 5 ²⁷ / _P	OUT -

1124

DAILY LOG
DIRECTOR'S OFFICE
FEDERAL BUREAU OF INVESTIGATION

FILE _____
DATE DEC 5 - 1961



Time	Caller	VIA	Action	Initials

DIRECTOR:	IN -	IN -	IN -	IN -	IN -
	OUT -	OUT -	OUT -	OUT -	OUT -

DAILY LOG
 DIRECTOR'S OFFICE
 FEDERAL BUREAU OF INVESTIGATION

FILE _____
 DATE DEC 6 - 1961

WZ

Time	Caller	VIA	Action	Initials
10 ⁰⁸ A	(Jacksonville, Fla.) Mr. T. H. Slade, Jr.	Tele	Rfd. to Mr. Weinbaugh.	By
10 ²⁵ A	Mrs. Ruth Nrends	Spec	Director out - Rfd. to SA O'Brien.	SA
2 ³⁵ P	Mr. Arthur Gardner	Tele	Director out - Terminated call.	Jur
2 ⁴⁵ P	Mr. James J. Bowley	Tele	Director out - Rfd. to Mr. Evans.	By
3 ²⁰ P	Mr. Francis Gray	Tele	Left message.	By
3 ⁵⁵ P	Mr. Z. B. Nichols	Tele	Spoke to Director.	By
4 ⁰⁵ P	SA Albert O. White	Spec	Saw Director	By
4 ²⁸ P	New Agent James M. Kellogg	Spec	Saw Director	By
	Photographer Buckmaster			
	SA Healy			
7 ²⁰ P	(East Moline, Ill.) Mr. Charles Baulding	Tele	Director out Rfd To SA Hodges	Jur
8 ⁰² P	(Newark, N.J.) Mrs. Helen Karolwski	Tele	Rfd To SA Hodges	Jur
	Office closed at 9:03 PM			Jur

DIRECTOR:	IN - 8 ⁵³ A	IN - 9 ⁵¹ A	IN - 11 ²² A	IN - 1 ¹³ P	IN -
(Lab)	OUT - 9 ⁴³ A	OUT - 10 ¹⁶ A	OUT - 11 ⁵³ A	OUT - 5 ¹⁸ P	OUT -

DAILY LOG
DIRECTOR'S OFFICE
FEDERAL BUREAU OF INVESTIGATION

FILE 1072
DATE DEC 6 - 1961

Time	Caller	VIA	Action	Initials
2:40	EX Ambassador Gardner	TELE		J

DIRECTOR: IN - IN - IN - IN - IN -
 OUT - OUT - OUT - OUT - OUT -

DAILY LOG
DIRECTOR'S OFFICE
FEDERAL BUREAU OF INVESTIGATION

Page 1
(Continued)

FILE

DEC 7 - 1961

DATE

Time	Caller	VIA	Action	Initials
9 ²⁴ / _A	Former SAC J. J. Kelly	Tele	Ref. to Mr. Weinbaugh.	By
9 ⁴⁹ / _A	SA George E. Mesnig; his wife, Peggy; & their married daughter, Lynn (Mrs. Benjamin R. Candler) Bureau Photographer	Pers	Saw Director	By
9 ⁵¹ / _A	(Gastonia, N. C.) Mr. Alvin Cain	Tele	Ref. to SA Healy.	By
9 ⁵⁴ / _A	Clerk Robert O. Rames; his wife, Karen; & her parents, Mr. & Mrs. Herman Redman SA Morris Bureau Photographer	Pers	Saw Director	By
10 ¹⁶ / _A	Mr. Francis Gray	Pers	Saw Director	By
10 ⁴⁰ / _A	SA C. E. Klein Kauf	Pers	Saw Director	By
11 ⁰⁷ / _A	SA M. C. Falkner	Pers	Saw Director	By
4 ⁰⁵ / _P	(Baltimore, Md.) Mr. Oliver Frazier	Tele	Director out - Ref. to SA Healy.	Jlu

(Continued on second page.)

DIRECTOR:	IN - 9 ⁰⁵ / _A	IN - 12 ⁵² / _P	IN -	IN -
	OUT - 11 ⁴⁹ / _A	OUT - 3 ⁴³ / _P	OUT -	OUT -

DAILY LOG
DIRECTOR'S OFFICE
FEDERAL BUREAU OF INVESTIGATION

FILE
DATE Dec. 7, 1961

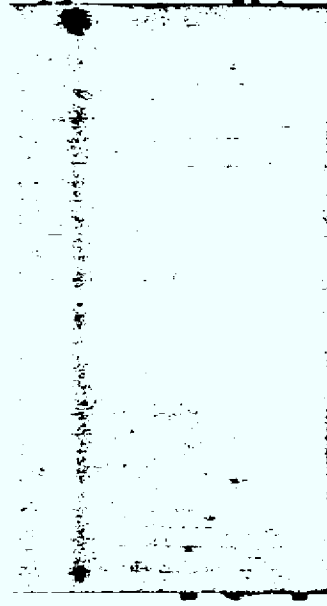
Time	Caller	VIA	Action	Initials
	(Continued from final page.)			
4:33	Rev. E. R. Sessions (Columbus, Ga.)	Tele	Director out - LEFT MESSAGE	By
5:20	WEST PALM BEACH, Fla. ATTORNEY GENERAL	Tele	DIRECTOR OUT - GIVEN MESSAGE	Rds
5:40	(ALEXICO, CALIF.) Mr. Robert E. Woodridge	Tele	DIRECTOR OUT LEFTWARD	flw
6:15	(Peace Corps) Sec. To Mr. R. SARGENT Shriver	Tele	Handled by Mr. Ingram	R/S flw
	Office Closed at 9:01 PM			flw

DIRECTOR:	IN -	IN -	IN -	IN -
	OUT -	OUT -	OUT -	OUT -

HWR

DAILY LOG
DIRECTOR'S OFFICE
FEDERAL BUREAU OF INVESTIGATION

FILE _____
DATE DEC 7 - 1961



Time	Caller	VIA	Action	Initial

DIRECTOR:

IN -	IN -	IN -	IN -	IN -
OUT -	OUT -	OUT -	OUT -	OUT -

DAILY LOG
 DIRECTOR'S OFFICE
 FEDERAL BUREAU OF INVESTIGATION

FILE Wise
 DATE DEC 8 - 1961

Time	Caller	VIA	Action	Initial
9 ³³ / _A	(Columbus, Ga.) Rev. E. R. Sessions	Tele	Director out - left message.	By
9 ⁴⁰ / _A	(Mansfield, La.) Mr. J. Luther Jordan	Tele	Director out - Bd. to Mr. Suttler.	By
9 ⁵³ / _A	Mr. Don McNeill	Buss	Saw Director	By
1	Taken on tour by SA Helleberg.			1
7 ⁵³ / _A	Judge Edward Tamm	Tele	Spoke to Director.	By
10 ²⁴ / _A	Dr. Daniel A. Boling	Buss	Saw Director	By
11 ²⁵ / _A	Mr. Robert Neale	Buss	Saw Director	By
11 ⁴² / _A	Mr. Arthur Gardner	Tele	Director out - Cancelled call.	By
11 ⁵⁰ / _A	(Columbus, Ga.) Rev. E. R. Sessions	Tele	Bd. to SA Healy.	By
2 ¹⁰ / _P	Mr. R. SARGENT Striner	Pers	SAW DIRECTOR	By
2 ⁵⁶ / _P	Clerk Farrell W. Rogers	Buss	Saw Director	By
2 ⁵⁸ / _P	Bureau Photographer	1	1	1
3 ¹⁹ / _P	Mr. Arthur Gardner	Tele	Spoke to Director.	By
3 ²⁸ / _P	Hon. Wm. B. Rogers	Tele	Spoke to Director.	By
* Office closed 9:02 PM RM				
4 ²³ / _P	(Princeton, N. S.) Mr. Peter Firestone	Tele	Left message.	By
	*			

DIRECTOR:	IN - 8 ⁵² / _A	IN - 12 ⁴⁹ / _P	IN -	IN -
	OUT - 11 ³⁶ / _A	OUT - 5 ⁴⁸ / _P	OUT -	OUT -

DAILY LOG
DIRECTOR'S OFFICE
FEDERAL BUREAU OF INVESTIGATION

FILE _____
DATE DEC 8 - 1961

12/8

Time	Caller	VIA	Action	Initials
10:15	Emmett W. Langley	Te	—	WJ
10:45	Called Emmett W. Langley		—	WJ

DIRECTOR:	IN -	IN -	IN -	IN -	IN -
	OUT -	OUT -	OUT -	OUT -	OUT -

DAILY LOG
DIRECTOR'S OFFICE
FEDERAL BUREAU OF INVESTIGATION

FILE 1009
DATE DEC 9 - 1961

Time	Caller	VIA	Action	Initials
	office closed at 2:01 PM			ghs

DIRECTOR:	IN -	IN -	IN -	IN -	IN -
	OUT -	OUT -	OUT -	OUT -	OUT -

DAILY LOG
 DIRECTOR'S OFFICE
 FEDERAL BUREAU OF INVESTIGATION

FILE W-2
 DATE DEC 9 - 1961

Time	Caller	VIA	Action	Initials

DIRECTOR:	IN -	IN -	IN -	IN -	IN -
	OUT -	OUT -	OUT -	OUT -	OUT -

HWB

DAILY LOG
DIRECTOR'S OFFICE
FEDERAL BUREAU OF INVESTIGATION

FILE _____
DATE DEC 10 1961

Time	Caller	VIA	Action	Initials
	<i>Office Closed All Day Sunday - By</i>			

DIRECTOR: IN - IN - IN - IN - IN -
 OUT - OUT - OUT - OUT - OUT -

DAILY LOG
 DIRECTOR'S OFFICE
 FEDERAL BUREAU OF INVESTIGATION

FILE _____
 DATE DEC 11 1961

Time	Caller	VIA	Action	Initial
9 ⁴⁴ / _A	SA James L. Flood & his wife, Maybelle Bureau Photographer	Pres	Saw Director	By
9 ⁴⁹ / _A	Mr. Thomas J. Donegan	Tele	Director out - Rd. to Mr. Tolson.	By
9 ⁵¹ / _A	Mr. J. J. Kelly	Pres	Saw Director	By
10 ²⁰ / _A	Mr. South Trimble, Jr.	Tele	Rd. to SA Heim.	By
10 ⁵⁶ / _A	Director tele Mrs. Harry Viney - Spoke.			By
11 ⁴¹ / _A	Mr. Woodson B. Houghton (N.Y.C.)	Tele	Rd. to Mr. Heim.	By
1 ²⁸ / _P	Mr. Max Sonino (Dallas, Texas)	Tele	Rd. to SA Healy.	By
2 ⁵² / _P	Mr. Bob Thompson	Tele	Spoke to Director.	By
3 ⁰⁰ / _P	Mr. Peter Firestone	Pres	Saw Director	By
1	SA Murphy	1	1	1
4 ³¹ / _P	Mrs. Anna H. Davis (Roseford, Ohio)	Tele	Cancelled call.	By
Office closed 9:00 PM Rd				

DIRECTOR:	IN - 9 ⁰³ / _A	IN - 12 ⁵⁹ / _P	IN -	IN -	IN -
	OUT - 12 ⁰¹ / _P	OUT - 5 ⁴⁸ / _P	OUT -	OUT -	OUT -

DAILY LOG
DIRECTOR'S OFFICE
FEDERAL BUREAU OF INVESTIGATION

11/12

FILE _____
DATE DEC 11 1961

Time	Caller	VIA	Action	Initial
	9:05 Carles Edwards		_____	MEZ

DIRECTOR:	IN - OUT -	IN - OUT -	IN - OUT -	IN - OUT -	IN - OUT -
-----------	---------------	---------------	---------------	---------------	---------------

DAILY LOG
 DIRECTOR'S OFFICE
 FEDERAL BUREAU OF INVESTIGATION

FILE _____ *10/12*
 DATE DEC 12 1961

Time	Caller	VIA	Action	Initials
10 ¹⁰ / _A	Mr. Carl H. Peterson; his wife; and their daughter Bureau photographs	Pers	Saw Director	By
11 ²⁰ / _A	Mrs. Irma Beyth (Fort Lauderdale, Fla.)	Pers	Director out - left office.	HEA
11 ³³ / _A	Mr. Tellie Essinger	Tele	Director out - Cancelled call.	By
12 ³² / _P	The office of Mr. Tom Webb, Jr. (Casper, Wyoming)	Tele	Left message.	By
1 ⁰⁰ / _P	Mr. George Reitemeier (Rossford, Ohio)	Tele	Director out - Ref. to SA O'Beine.	By
1 ¹⁷ / _P	Mrs. Anna H. Davis (East Moline, Ill)	Tele	Cancelled call.	By
1 ²¹ / _P	Mr. Charles Spaulding	Tele	Director out - left message.	By
1 ⁵⁸ / _P	AAG Yeungley's office (R. OHIO)	Tele	left message.	By
1 ⁵¹ / _P	Cms. Wm. M. McClendon	Tele	DIRECTOR OUT REF TO SA FEAR	RLL
3 ³⁰ / _P	THE OFFICE OF DR. ABRAHAM VERREIDE (Suite Lake City, Utah)	Tele	DIRECTOR OUT REF TO SA FEARNING	RLL
3 ⁵¹ / _P	Dr. Preston Robinson	Tele	Director out - Terminated call.	By
4 ¹⁸ / _P	Mr. John McCone SAN ANTONIO, TEXAS	Pers	Saw Director	By
6 ⁴⁷ / _P	MISS FRANCES ELIZABETH JONES	Tele	DIRECTOR OUT CALL CANCELLED	RLL
7 ³⁰ / _P	Mr. Grover Revels	Tele	DIRECTOR OUT REF TO SA HODGES	RLL
Office closed 9:00 AM				RLL

DIRECTOR:	IN - 8 ⁵³ / _A	IN - 1 ³⁵ / _P	IN -	IN -
	OUT - 12 ⁴³ / _P	OUT - 5:55	OUT -	OUT -

DAILY LOG
DIRECTOR'S OFFICE
FEDERAL BUREAU OF INVESTIGATION

16705
FILE _____
DATE DEC 12 1961

Time	Caller	VIA	Action	Initials
525	<i>Quinn Tamm</i>	<i>Tele</i>	<i>_____</i>	<i>WOS</i>

DIRECTOR:	IN - OUT -	IN - OUT -	IN - OUT -	IN - OUT -	IN - OUT -
-----------	---------------	---------------	---------------	---------------	---------------

DAILY LOG
 DIRECTOR'S OFFICE
 FEDERAL BUREAU OF INVESTIGATION

FILE 1002
 DATE DEC 13 1961

Time	Caller	VIA	Action	Initials
9 ⁰⁴ / _A	Director tele Mr. Tudor		- Spoke.	By
9 ¹⁴ / _A	Miss Anne V. Murphy	Per	Saw Director	By
1	Bureau Photographer (Cincinnati, Ohio)	1	1	1
11 ³¹ / _A	Mr. Robert A. Hagerly	Tele	Director out - Ref. to Mr. Kemper.	By
12 ²² / _P	Mr. Gerald Osbourne (Hartford, Conn.)	Tele	Director out - Ref. to SA O'Brien.	By
3 ³² / _P	Dr. Dudley Miller (RE 7-4600)	Tele	Director out - Ref. to SA Reed.	By
4 ⁴² / _P	Director tele Medical Center (Ocean City, La.)		- Spoke.	By
4 ⁴⁸ / _P	Mr. Louis Badgett (Rossford, Ohio)	Tele	Director out - Ref. to Mr. Kemper.	By
5 ⁴⁹ / _P	Mrs ANNA DURIS NEWPORT BEACH, CAL.	TELE	DIRECTOR OUT CALL TERMINATED	Roll
5 ⁴² / _P	CORONEL JAMES LEE HOWARD	TELE	DIRECTOR OUT REF. TO SA FIDGES	Roll
	Office closed 9:21 PM		Roll	

DIRECTOR: IN - 9⁰¹/_A OUT - 9³⁸/_A (statley)
 IN - 11⁰⁸/_A OUT - 12¹⁶/_P
 IN - 1:12 P OUT - 4⁴⁴/_P
 IN - OUT -
 IN - OUT -

DAILY LOG
DIRECTOR'S OFFICE
FEDERAL BUREAU OF INVESTIGATION

FILE _____
DATE DEC 13 1961 *Big*

Time	Caller	VIA	Action	Initial

DIRECTOR:	IN - OUT -	IN - OUT -	IN - OUT -	IN - OUT -	IN - OUT -
-----------	---------------	---------------	---------------	---------------	---------------

DAILY LOG
 DIRECTOR'S OFFICE
 FEDERAL BUREAU OF INVESTIGATION

FILE 1075
 DATE DEC 14 1961

Time	Caller	VIA	Action	Initial
10 ¹⁸ / _A	Mr. John S. Alessio	BUS	Director out - Regrets expressed.	BJJ
2 ¹⁴ / ₋	SAN ANTONIO, TEXAS Miss FRANCES ELIZABETH JONES	TELE	DIRECTOR OUT CALL TERMINATED	Rdl
2 ⁴⁰ / ₈	Mr. Joe Seyensits	BUS	TOOK CON.	BJJ
1	Mr. & Mrs. Wm. Hutchinson	I	I	I
5 ¹⁴ / ₄	THE DIRECTOR	TELE	HANDLE BY Miss GANDY	BJJ
Office closed 9:01 PM Rdl				

DIRECTOR: IN - 9²⁶/_A
 (Airborne) OUT - 11⁰⁷/_A

IN -	IN -	IN -	IN -
OUT -	OUT -	OUT -	OUT -

DAILY LOG
DIRECTOR'S OFFICE
FEDERAL BUREAU OF INVESTIGATION

FILE _____

1875

DATE

DEC 14 1961

Time	Caller	VIA	Action	Initials
	<i>4:57 - Mr. Hoover, Miami</i>	<i>tel</i>	<i>Return</i>	<i>KW</i>

DIRECTOR:

IN -	IN -	IN -	IN -	IN -
OUT -	OUT -	OUT -	OUT -	OUT -

10/5/61

DAILY LOG
 DIRECTOR'S OFFICE
 FEDERAL BUREAU OF INVESTIGATION

FILE _____
 DATE DEC 15 1961

Time	Caller	VIA	Action	Initials
<i>1³¹</i>	<i>THE DIRECTOR</i>	<i>TELE</i>	<i>HANDLED BY MISS GANDY</i>	<i>RG</i>
<i>5¹⁴</i>	<i>THE DIRECTOR</i>	<i>TELE</i>	<i>HANDLED BY MISS GANDY</i>	<i>RG</i>
	<i>Office closed 9:02 PM</i>			<i>RG</i>

DIRECTOR:	IN -	IN -	IN -	IN -	IN -
	OUT -	OUT -	OUT -	OUT -	OUT -

DAILY LOG
 DIRECTOR'S OFFICE
 FEDERAL BUREAU OF INVESTIGATION

FILE
 DATE DEC 15 1961

Time	Caller	Via	Action	Initials
7:55 56	Page Curran Mr Hoover Miami	tele	to Belmont/ Mohr	KWS

DIRECTOR:	IN -	IN -	IN -	IN -	IN -
	OUT -	OUT -	OUT -	OUT -	OUT -

DAILY LOG
DIRECTOR'S OFFICE
FEDERAL BUREAU OF INVESTIGATION

FILE _____
DATE DEC 16 1961

LDW

Time	Caller	VIA	Action	Initials
10 ³⁰	Mr. Anna Duris	TELE	CALL TERMINATED	RL
	Office closed	2:05 PM	RL	

DIRECTOR:	IN -	IN -	IN -	IN -
	OUT -	OUT -	OUT -	OUT -

HWZ

DAILY LOG
DIRECTOR'S OFFICE
FEDERAL BUREAU OF INVESTIGATION

FILE _____
DATE DEC 16 1961

Time	Caller	VIA	Action	Initial

DIRECTOR:	IN -	IN -	IN -	IN -	IN -
	OUT -	OUT -	OUT -	OUT -	OUT -

OWS

DAILY LOG
 DIRECTOR'S OFFICE
 FEDERAL BUREAU OF INVESTIGATION

FILE _____
 DATE DEC 17 1961

Time	Caller	VIA	Action	Initials
	<i>Office closed all day</i>		<i>Roll</i>	

DIRECTOR:	IN -	IN -	IN -	IN -	IN -
	OUT -	OUT -	OUT -	OUT -	OUT -

DAILY LOG
 DIRECTOR'S OFFICE
 FEDERAL BUREAU OF INVESTIGATION

FILE _____
 DATE DEC 17 1961

Time	Caller	VIA	Action	Initials

3:45 - 10:00

DIRECTOR:	IN -	IN -	IN -	IN -	IN -
	OUT -	OUT -	OUT -	OUT -	OUT -

DAILY LOG
 DIRECTOR'S OFFICE
 FEDERAL BUREAU OF INVESTIGATION

FILE H-215
 DATE DEC 18 1961

Time	Caller	Title	Action	Initials
1:35	Mr. Hoover	Miami	tele Belmont / Mohr	HWS
5:00	Mr. Hoover	Miami	tele Belmont / Mohr	HWS
5:25	Mr. Hoover	Miami	tele Belmont / Mohr	HWS

DIRECTOR: IN - IN - IN - IN - IN -
 OUT - OUT - OUT - OUT - OUT -

DAILY LOG
 DIRECTOR'S OFFICE
 FEDERAL BUREAU OF INVESTIGATION

FILE _____ *HW*
 DATE **DEC 19 1961**

Time	Caller	VIA	Action	Initials
10 ³¹ / _A	Mr. Jack Levine	Bevs	Director out - 20FC office.	Bat
11 ⁰² / _A	Mr. Hoover	Tele	Handled by Miss Gandy.	Gy
11 ²⁰ / _A	(Rossford, Ohio) Mrs. Anna H. Davis	Tele	Call cancelled.	Gy
12 ¹⁵ / _P	Mr. Edward Stewart	Bevs	Director out - Rfd. to SA Reed.	Bat
3 ³⁰ / _P	Mr. Hoover	Tele	Handled by Miss Gandy.	Gy
3 ⁴⁵ / _P	Mr. Thomas J. Duncan	File	Rfd. to SA Healy.	Gy
4 ⁰⁸ / _P	Mrs. Edward Fox	Tele	Director & Mr. Tolson out. Terminated call.	Gy
6 ³⁰ / _P	(Shreveport, LA.) Mr. SCOTT YEARWOOD	Tele	DIRECTOR OUT CALL CANCELLED	JS
8 ⁴⁵ / _P	(FORT WORTH, TEXAS) Mr. BRIAN HOLLINGSWORTH	Tele	DIRECTOR OUT Rfd to SA LIGHT	JS
	Office closed at 9:01 PM			JS

DIRECTOR:	IN -	IN -	IN -	IN -	IN -
	OUT -	OUT -	OUT -	OUT -	OUT -

DAILY LOG
 DIRECTOR'S OFFICE
 FEDERAL BUREAU OF INVESTIGATION

FILE 103
 DATE DEC 19 1961

Time	Caller	VIA	Action	Initials
1055	Mr Hoover - Miami	Tele	Mr Belmont	HWC
335	Mr Hoover - Miami	Tele	Mr Belmont, Mr Mohr	HWC
10	Mr Hoover - Miami	Tele		HWC

DIRECTOR:	IN -	IN -	IN -	IN -	IN -
	OUT -	OUT -	OUT -	OUT -	OUT -

DAILY LOG
 DIRECTOR'S OFFICE
 FEDERAL BUREAU OF INVESTIGATION

1005

FILE _____
 DATE DEC 20 1961

Time	Caller	VIA	Action	Initials
10 ¹⁵	Mr. Hoover Miami	tel	Belmont	[initials]
40 ⁵	Mr. Hoover Miami	tel	Trotter - Mr. Hoover also talked to A.G. in West Palm Beach	[initials]

DIRECTOR:	IN -	IN -	IN -	IN -	IN -
	OUT -	OUT -	OUT -	OUT -	OUT -

DAILY LOG
 DIRECTOR'S OFFICE
 FEDERAL BUREAU OF INVESTIGATION

FILE
 DATE DEC 21 1961

Time	Caller	VIA	Action	Initials
11 ⁰³ A	Mr. Hoover	Tele	Handled by Miss Gandy.	By
12 ⁰⁵ P	Mr. James V. Bennett	Tele	Director out- Terminated call.	By
1 ³⁰ P	Mr. Richard Millman	Pers	Rtd to Mr. Donahoe	flw
2 ³⁷ P	Miss Weitzell in Dr. Thomas Connell's Office	Tele	Left message.	By
4 ¹⁵ P	Mr. Hoover	Tele	Handled by Miss Gandy.	By
5 ¹⁶ P	Ans. Henry J. Taylor	Tele	Director out- Rtd. to Mr. Belmont.	flw
	office closed at 9:02 PM			flw

DIRECTOR:	IN -	IN -	IN -	IN -	IN -
	OUT -	OUT -	OUT -	OUT -	OUT -

DAILY LOG
DIRECTOR'S OFFICE
FEDERAL BUREAU OF INVESTIGATION

FILE Hof
DATE DEC 21 1961

Time	Caller		VIA	Action	Initials
11:00	Lin Hoover	Miami	tee	Belmont / Mohr	Hof
4:07	Lin Hoover	Miami	th	Belmont / Mohr	Hof

DIRECTOR:	IN -	IN -	IN -	IN -	IN -
	OUT -	OUT -	OUT -	OUT -	OUT -

DAILY LOG
 DIRECTOR'S OFFICE
 FEDERAL BUREAU OF INVESTIGATION

FILE _____
 DATE DEC 22 1961

10/2

Time	Caller	VIA	Action	Initials
12 ¹⁷ / ₈	Mrs. George Petroyoulos (Cambridge, Mass.)	Tele	B&D. Co Mr. Kemper	EG
12 ⁴⁰ / ₈	Lilian McLean	Tele	Director on - Terminated call.	EG
3 ² / ₈	Mr. Hoover	Tele	Handled by Miss Gandy.	EG
5 ¹⁶ / ₈	Mr. Hoover	Tele	Handled by Miss Gandy.	EG
office closed at 9:02 pm				JW

DIRECTOR:	IN -	IN -	IN -	IN -
	OUT -	OUT -	OUT -	OUT -

DAILY LOG
DIRECTOR'S OFFICE
FEDERAL BUREAU OF INVESTIGATION

673
FILE _____
DATE DEC 22 1961

Time	Caller	VIA	Action	Initials
	Mr. Hoover	Miami	tel Belmont / Hoover	HW
	Mr. Hoover	"	tel " "	HW

DIRECTOR:	IN -	IN -	IN -	IN -
	OUT -	OUT -	OUT -	OUT -

DAILY LOG
DIRECTOR'S OFFICE
FEDERAL BUREAU OF INVESTIGATION

FILE HUS
DEC 24 1961
DATE _____



Time	Caller	VIA	Action	Initials

DIRECTOR:	IN - OUT -	IN - OUT -	IN - OUT -	IN - OUT -	IN - OUT -
-----------	---------------	---------------	---------------	---------------	---------------

DAILY LOG
 DIRECTOR'S OFFICE
 FEDERAL BUREAU OF INVESTIGATION

FILE 1014
 DATE DEC 25 1961

Time	Caller	VIA	Action	Initial
<i>Christmas Day - Office closed all day</i>				

DIRECTOR:	IN -	IN -	IN -	IN -	IN -
	OUT -	OUT -	OUT -	OUT -	OUT -

DAILY LOG
DIRECTOR'S OFFICE
FEDERAL BUREAU OF INVESTIGATION

FILE 1016
DATE DEC 25 1961



Time	Caller	VIA	Action	Initials

DIRECTOR:	IN -	IN -	IN -	IN -	IN -
	OUT -	OUT -	OUT -	OUT -	OUT -

DAILY LOG
 DIRECTOR'S OFFICE
 FEDERAL BUREAU OF INVESTIGATION

FILE _____
 DATE DEC 26 1961

HW

Time	Caller	VIA	Action	Initials
10 ³⁷ A	SA James E. Garris	Tele	Ref. to Mr. Davidson.	By
9 ⁰⁷ 8	Cong. M. Blaine	Bees	Taken on call by SA Reever.	By
1	Peterson & party	1	1	1
1 ⁵⁶ 9	Mr. Hoover (N.Y.C.)	Tele	Handled by Miss Gandy	By
2 ³⁰ 8	Mr. Bruce Fox	Tele	Director out - Cancelled call.	By
4 ¹⁰ 8	Mr. Jack Gosnell	Tele	Ref. to SA O'Beirne.	By
4 ⁰⁵ 8	Mr. Chuck Arnold (Tucson, Arizona)	Tele	Director out - Cancelled call.	By
4 ⁵⁰ 8	Max Bradshaw	Tele	Director out - Ref. to Mr. MacLennan.	By
4 ⁵⁵ 8	Mr. Hoover	Tele	Handled by Miss Gandy.	By
office closed at 9:02 PM				By

DIRECTOR:	IN -	IN -	IN -	IN -	IN -
	OUT -	OUT -	OUT -	OUT -	OUT -

DAILY LOG
 DIRECTOR'S OFFICE
 FEDERAL BUREAU OF INVESTIGATION

FILE

My

DEC 27 1961

DATE

Time	Caller	VIA	Action	Initials
10 ¹¹ / _A	Cong. H. R. Gross (New York City)	Tele	Director out - Rfd. to Mr. Kemper.	Gj
11 ⁰⁰ / _A	Mr. Bernard "Toots" Shay	Tele	Director out - Rfd. to Mr. Weinbaugh.	Gj
11 ¹⁵ / _A	Mr. Hoover	Tele	Handled by Miss Gandy.	Gj
2 ¹² / _P	Sen. Homer E. Cayhart	Tele	Director out - Cancelled call.	BH
2 ³⁸ / _P	Former Cong. Cal Johnson	Tele	Director out - Lack message.	Gj
1 ⁵⁰ / _P	Mr. Hoover	Tele	Handled by Miss Gandy.	Gj
office closed at 9:03 PM				

DIRECTOR:	IN -	IN -	IN -	IN -	IN -
	OUT -	OUT -	OUT -	OUT -	OUT -

DAILY LOG
DIRECTOR'S OFFICE
FEDERAL BUREAU OF INVESTIGATION

FILE ⁵⁰³
DATE DEC 27 1961

Time	Caller	VIA	Action	Initials
10:45	Bower Rrett	tel		K20
11:08	Mr Hoover Miami	tel		KW
4:45	Bower Rrett	tel		KW
4:52	Mr Hoover Miami	tel		KW

DIRECTOR:	IN -	IN -	IN -	IN -
	OUT -	OUT -	OUT -	OUT -

DAILY LOG
DIRECTOR'S OFFICE
FEDERAL BUREAU OF INVESTIGATION

FILE 1072
DATE DEC 28 1961

Time	Caller	VIA	Action	Initials
9:05 AM	Mr. Hoover	Tele	Handled by Miss Gandy.	By G
11:51 AM	Mr. Hoover	Tele	Handled by Miss Gandy.	By G
3:00 PM	Cong. John J. Rhodes	Tele	Rfd. to Mr. DeLoach.	By G
6:30 PM	Mr. Belmont	Tele	Spoke To Director	Jew
	Office Closed at 9:03 PM — Jew			

DIRECTOR:	IN - 5:00 OUT - 6:42	IN -	IN -	IN -	IN -
		OUT -	OUT -	OUT -	OUT -

DAILY LOG
 DIRECTOR'S OFFICE
 FEDERAL BUREAU OF INVESTIGATION

FILE 105
 DATE DEC 28 1961

Time	Caller	VIA	Action	Initials
9:00	Mr. Hoover Miami	tele	Belmont	Hoy
11:50	Mr. Hoover Miami	Tele		Hoy

DIRECTOR:	IN - OUT -	IN - OUT -	IN - OUT -	IN - OUT -	IN - OUT -
-----------	---------------	---------------	---------------	---------------	---------------

DAILY LOG
 DIRECTOR'S OFFICE
 FEDERAL BUREAU OF INVESTIGATION

FILE _____
 DATE DEC 29 1961

Time	Caller	VIA	Action	Initials
9 ⁰⁰ / _A	Mr. Robert Freer, Sr. (Concord, New Hampshire)	Tele	Director out - left message.	By
11 ²⁷ / _P	Mr. Conrad Goldsmith	Tele	Director out - Rtd. to Mr. Kemper.	OK
12 ¹⁰ / _P	A secretary in the office of Senator Alan Bible	Tele	Rtd. to Mr. Kemper.	By
12 ²⁰ / _P	Mr. Charles A. Foster;	Pers	Arranged conv.	By
1	his wife; and their son	1	1	1
1 ⁴⁵ / _P	Mr. George A. GALLIGAN (Arcadia, Calif.)	Pers	Left Letter	RLK
1 ⁵⁰ / _P	Mr. John Beverly	Tele	Director out Rtd to Mr. Tolson	JW
3 ⁴⁰ / _P	Mr. & Mrs. Charles A. Foster and their son, Hugh SA Helleberg	Pers	Saw Director	By
7 ⁰⁶ / _P	(Franklinton, N.C.) Mr. William Louis McNamee	Tele	Director out call cancelled	JW
	office closed at 9:01 PM			JW

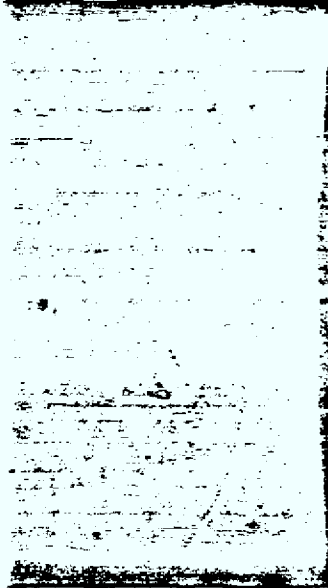
DIRECTOR: IN - 9²⁴/_A OUT - 11⁵¹/_A IN - 1⁰¹/_P OUT - 6⁰²/_P IN - OUT - IN - OUT - IN - OUT -

3

DAILY LOG
DIRECTOR'S OFFICE
FEDERAL BUREAU OF INVESTIGATION

FILE HQ
DATE DEC 29 1961

Time	Caller	VIA	Action	Initials
	Mr. Propp Miami	Telex	Return Call	HW



DIRECTOR:	IN -	IN -	IN -	IN -	IN -
	OUT -	OUT -	OUT -	OUT -	OUT -

HWB

DAILY LOG
DIRECTOR'S OFFICE
FEDERAL BUREAU OF INVESTIGATION

FILE _____
DATE DEC 30 1961

Time	Caller	VIA	Action	Initials
	<i>office closed at 2:01 PM</i>			<i>HWB</i>

DIRECTOR:

IN -

IN -

IN -

IN -

IN -

OUT -

OUT -

OUT -

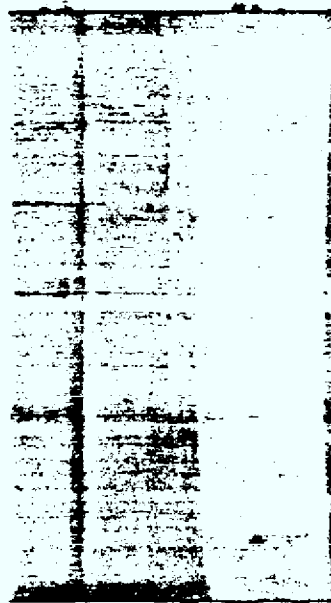
OUT -

OUT -

DAILY LOG
DIRECTOR'S OFFICE
FEDERAL BUREAU OF INVESTIGATION

FILE 1749
DATE DEC 30 1961

Time	Caller	VIA	Action	Initials
12:45	Mr Hoover	tel		MLR



DIRECTOR:

IN -	IN -	IN -	IN -	IN -
OUT -	OUT -	OUT -	OUT -	OUT -

DAILY LOG
 DIRECTOR'S OFFICE
 FEDERAL BUREAU OF INVESTIGATION

FILE 117
 DATE DEC 31 1961

Time	Caller	VIA	Action	Initials	
	<i>Office Closed All Day Sunday - By</i>				

DIRECTOR:	IN -	IN -	IN -	IN -	IN -
	OUT -	OUT -	OUT -	OUT -	OUT -

DAILY LOG
DIRECTOR'S OFFICE
FEDERAL BUREAU OF INVESTIGATION

FILE H/12
DATE DEC 31 1961

Time	Caller	VIA	Action	Initial

DIRECTOR: IN -	IN -	IN -	IN -	IN -
OUT -	OUT -	OUT -	OUT -	OUT -