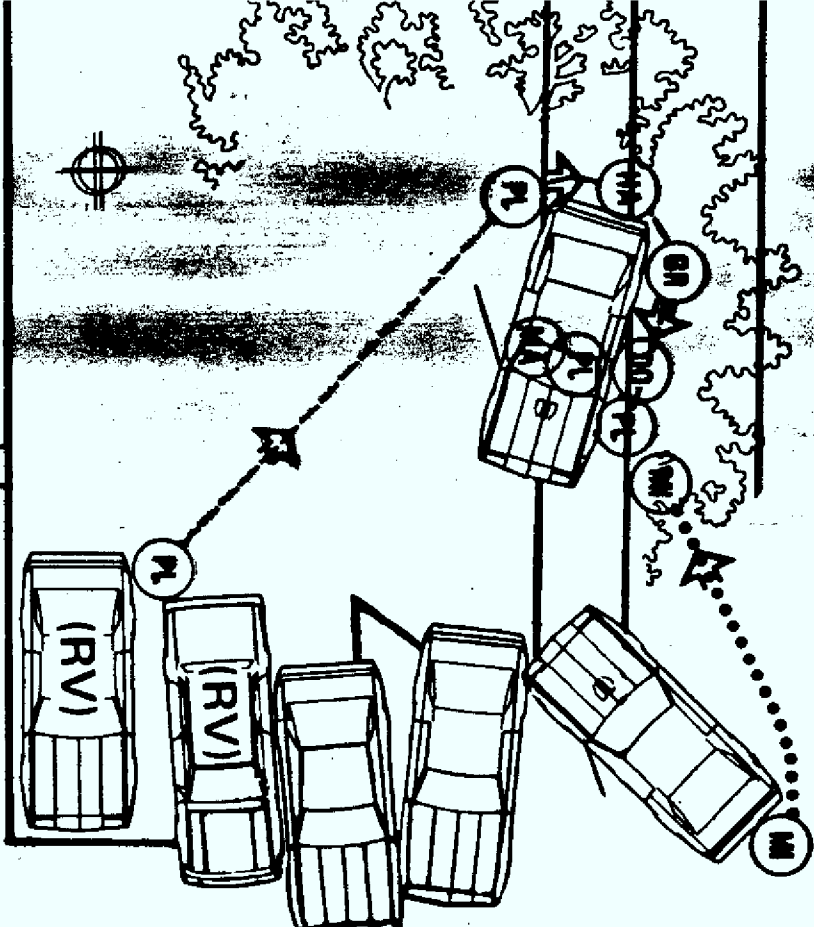


82ND AVE



12201 82ND

EVENTS IN SEQUENTIAL ORDER

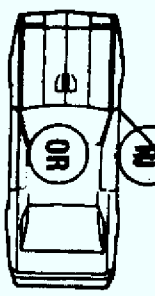
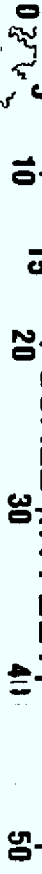
PLATT MOVES TO RIGHT REAR OF GROGAN'S VEHICLE.
 RISNER SEES MOVEMENT, YELLS TO GROGAN AND OTHERS, SHOOTS AT PLATT
 PLATT SHOTS HANLON IN GROIN.
 PLATT SHOTS GROGAN IN RIGHT SIDE:
 PLATT SHOTS DOVE IN BACK AND HEAD.
 MATIX ENTERS GROGAN VEHICLE ON PASSENGER SIDE.
 PLATT ENTERS GROGAN VEHICLE DRIVER SIDE.
 PLATT FIRES THREE SHOTS FROM DRIVER'S SIDE WITH DAN WESSON REVOLVER
 MIRELES FIRES FIVE ROUNDS WITH SHOTGUN AT PLATT AND MATIX INTO GROGAN'S VEHICLE.
 MIRELES WALKS TOWARDS GROGAN VEHICLE... FIRES SIX SHOTS AT PLATT AND MATIX IN VEHICLE.

- MA - Matix ●
- MN - Manauzzi
- GR - Grogan
- DO - Dove
- MC - McNeill
- HA - Hanlon
- MI - Mireles
- RI - Risner
- OR - Oriantha
- PL - Platt ●



122ND

SCALE IN FEET



XXXXXX
XXXXXX
XXXXXXFEDERAL BUREAU OF INVESTIGATION
FOIPA DELETED PAGE INFORMATION SHEET21

Page(s) withheld entirely at this location in the file. One or more of the following statements, where indicated, explain this deletion.



Deleted under exemption(s) (b)(7)(D) (b)(6)/(b)(7)(C) with no segregable material available for release to you.



Information pertained only to a third party with no reference to you or the subject of your request.



Information pertained only to a third party. Your name is listed in the title only.



Documents originated with another Government agency(ies). These documents were referred to that agency(ies) for review and direct response to you.

_____ Pages contain information furnished by another Government agency(ies). You will be advised by the FBI as to the releasability of this information following our consultation with the other agency(ies).

_____ Page(s) withheld for the following reason(s):



For your information: _____



The following number is to be used for reference regarding these pages:

62-121996-6 EBF-TAB 89

XXXXXX
XXXXXX
XXXXXX
 XXXXXXXXXXXXXXXXXXXX
 X DELETED PAGE(S) X
 X NO DUPLICATION FEE X
 X FOR THIS PAGE X
 XXXXXXXXXXXXXXXXXXXX



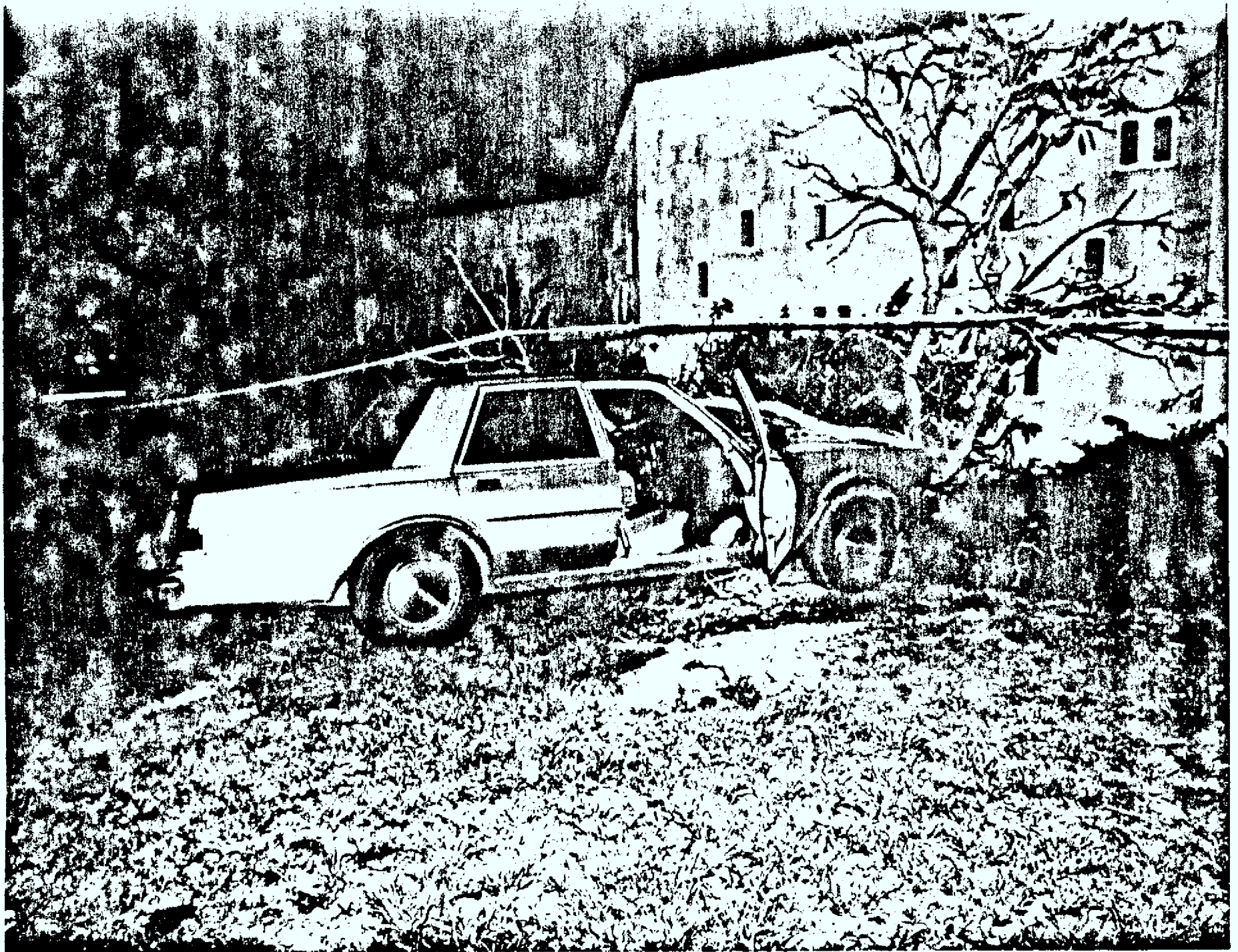
R1-5





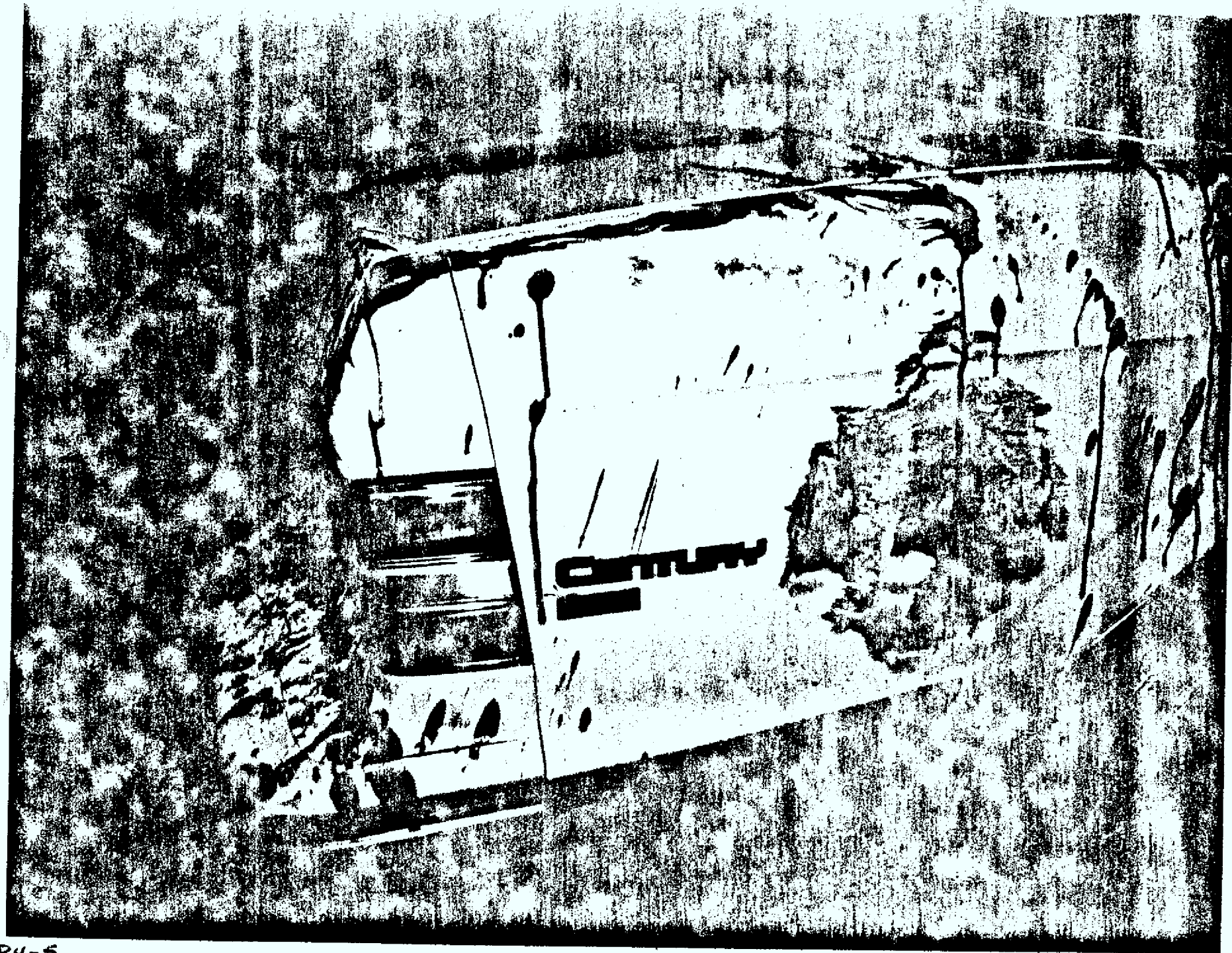
R1-12





P2-3

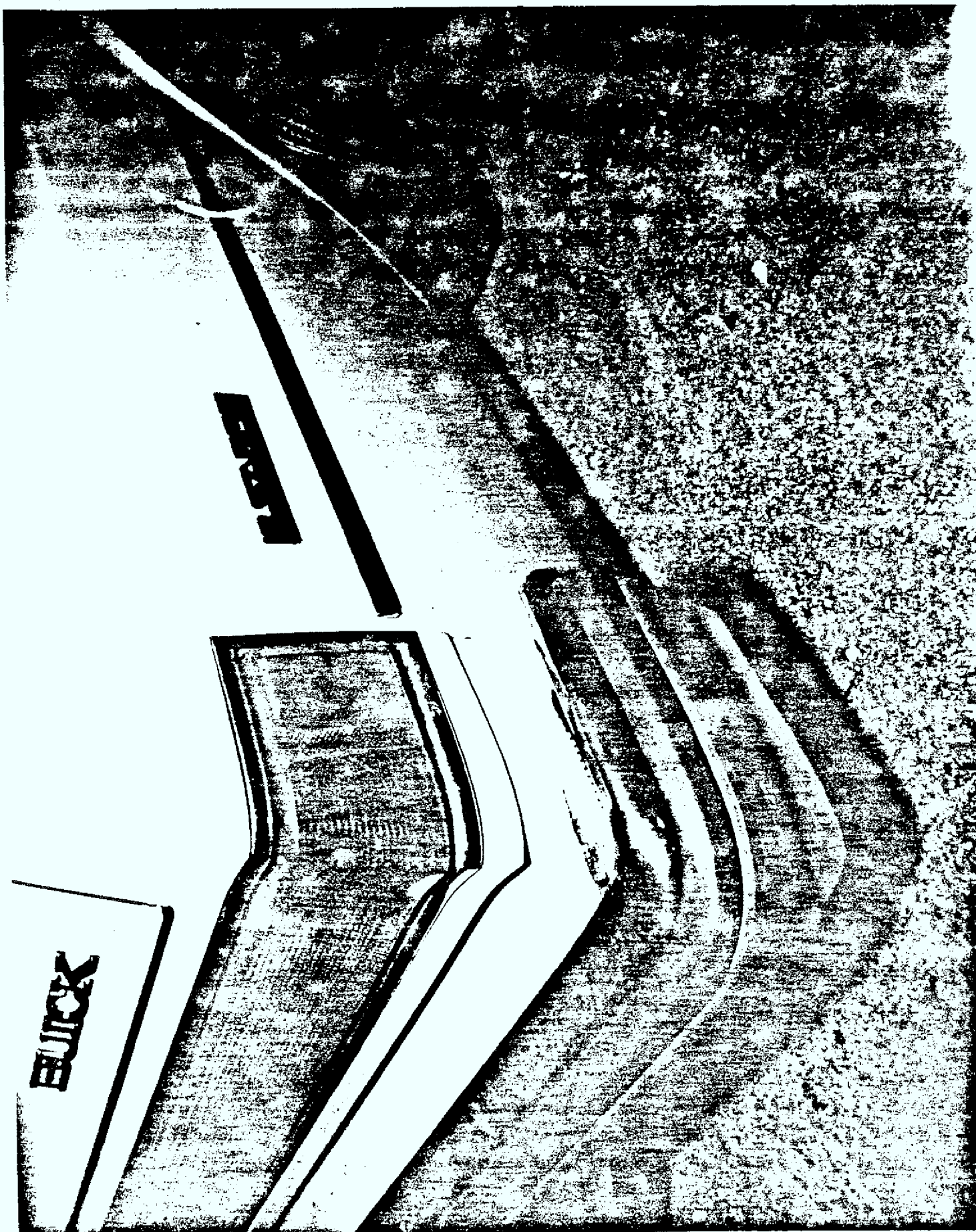


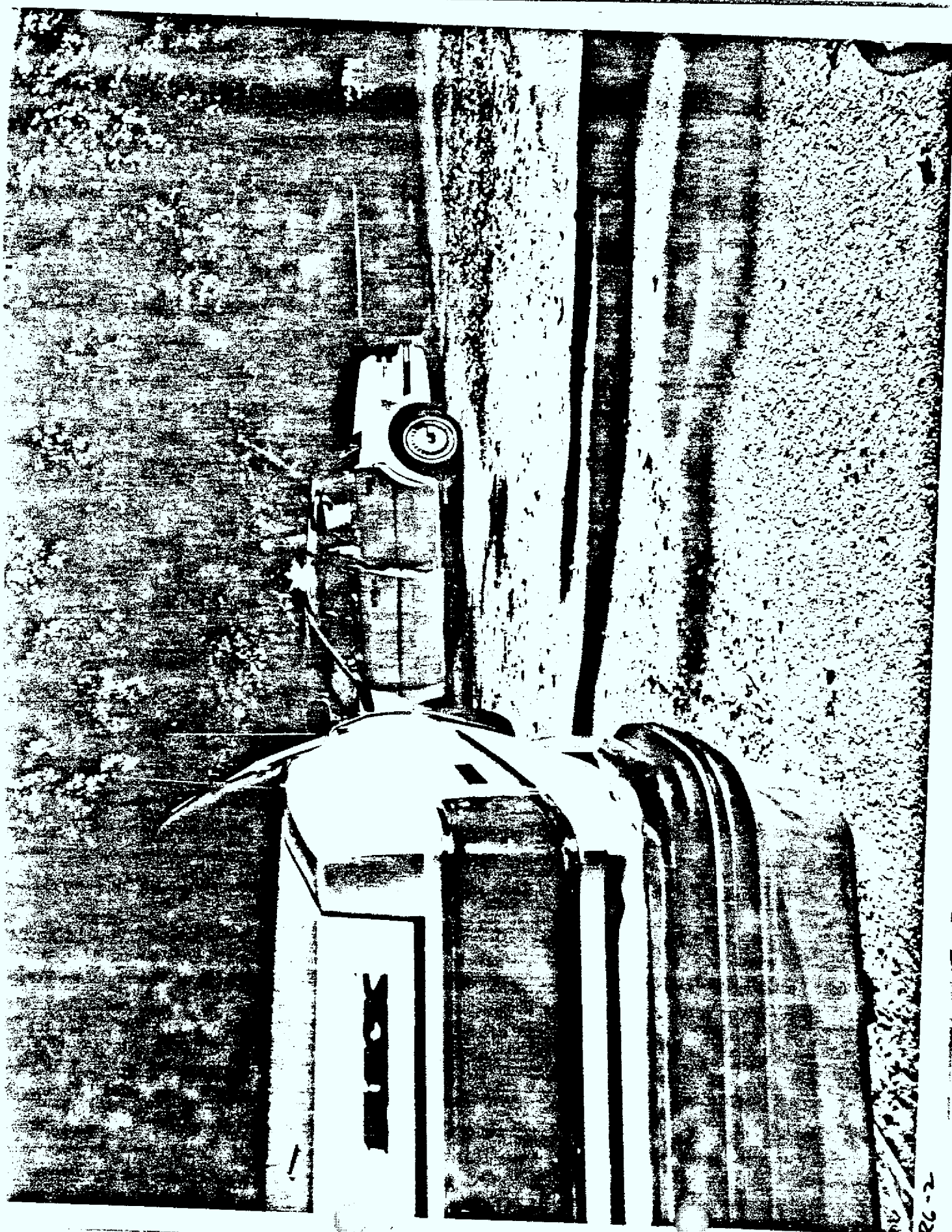


R4-5









RC-2





R6-5





